

**Rakks**

# Rakks

## Starter Set

Start small, expand as you need. With its modular design, Rakks Shelving allows for easy expansion and customization to fit any space, adapting to your changing needs.

Visit our website at [Rakks.com](http://Rakks.com) or contact us at [Service@Rakks.com](mailto:Service@Rakks.com) to learn more.

Tag @RakksShelving on Instagram.

### Specifications

#### Wall compatibility

We recommend drywall with wall studs or blocking

#### Material

Recycled aluminum

#### Load capacity

100lbs per shelf

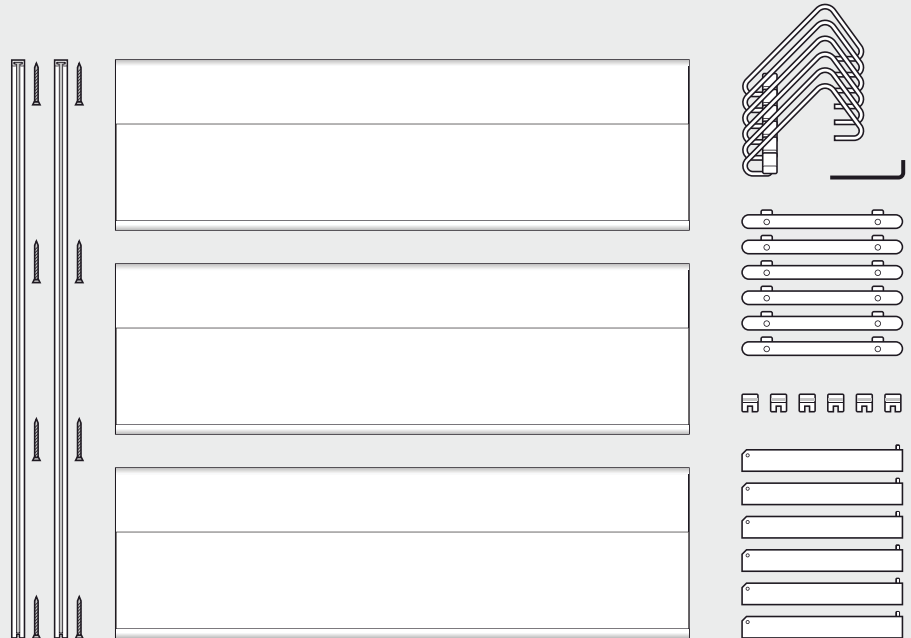
#### Assembled size

36" x 36" x 10½"

Scan using your Camera app for a digital version of this guide:



### Parts included



2 × C-style standards with mounting screws

6 × Rakks style brackets with retaining pins

6 × sliding wire bookends

3 × Rakks aluminum shelves (4" + 6" sections)

6 × shelf end caps

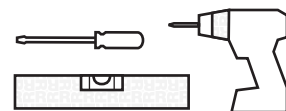
6 × hold-down clips

### You will need

Stud finder  
Measuring tape  
Pencil or painter's tape



Level  
Drill driver + 3/32" bit  
Philips screwdriver



# Starter Set

## Step 1

### Mark out and install the standards on the wall.

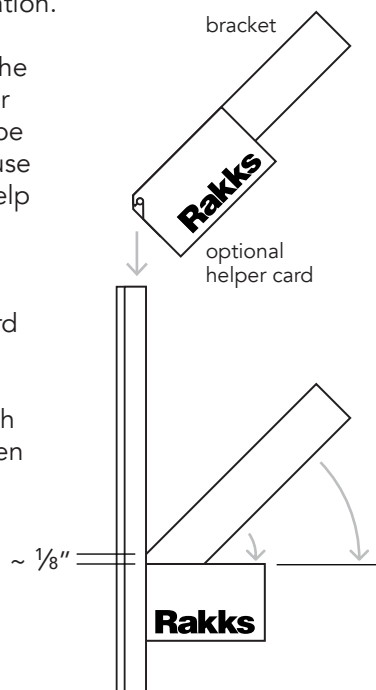
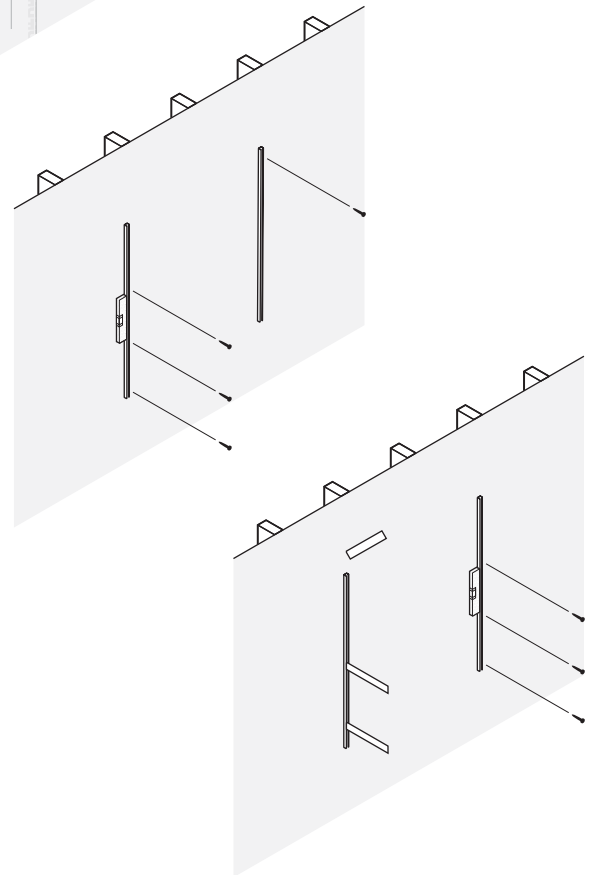
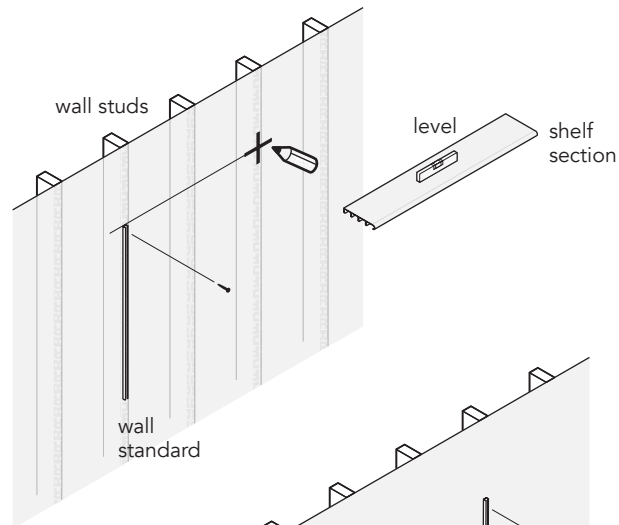
Use a **stud finder** to locate the wall studs or blocking behind the wall. Typical studs are 16" apart on center.

Mark out and attach the first **wall standard** to the wall by screwing in only the top **mounting screw**. We recommend drilling pilot holes at least 1½" deep to ease installation.

Next you will mark the top of the other wall standard. Remember that the standards should not be more than 32" apart. You can use a **level** on a **shelf section** to help you keep the standards on the same horizontal plane.

Attach the second wall standard with a top screw.

Use the level to check that each standard is vertical (plumb), then put in the remaining screws.



## Step 2

### Mark out and secure the brackets to the wall standards.

Using a pencil, mark one of the wall standards to indicate where the bottom edge of each shelf will be. Leave a 3" clearance from either end of the wall standards.

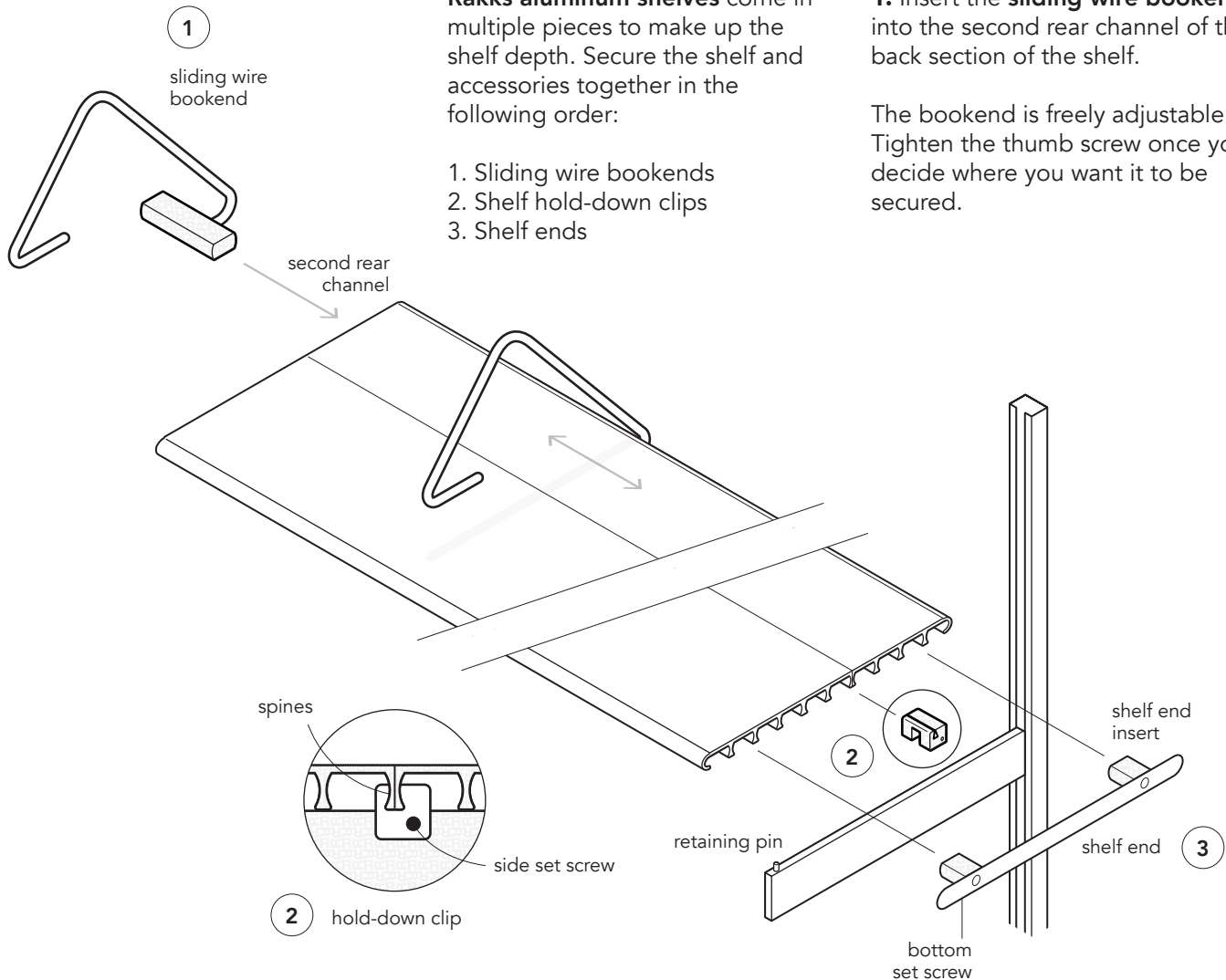
Insert the **brackets** at a 45° angle, with the **helper card** provided, into the channel entry points at the top or bottom of the wall standard. Use the helper card to align the bracket precisely to the pencil mark or hold the bracket about 1/8" above the pencil mark on the wall standard.

Lock into position by pulling down on the bracket firmly.

Mark out and place all remaining brackets. You can use the level on a shelf section to help you keep the adjacent brackets on the same horizontal plane.

### Step 3

#### Install the shelves and accessories



Rakks aluminum shelves come in multiple pieces to make up the shelf depth. Secure the shelf and accessories together in the following order:

1. Sliding wire bookends
2. Shelf hold-down clips
3. Shelf ends

**1.** Insert the **sliding wire bookend** into the second rear channel of the back section of the shelf.

The bookend is freely adjustable. Tighten the thumb screw once you decide where you want it to be secured.

**2.** Shelf **hold-down clips** prevent side-to-side movement and hold the shelf firmly in place. They hold together the two adjacent **spines** of the shelf sections. The notch in the center of the hold-down clip sits over and attaches to the bracket.

Slide the hold-down clip along the underside of the seam and position

it over the bracket. Make sure the shelves are properly positioned and aligned. The small **retaining pin** on the bracket sits against the first spine and prevents front-to-back movement.

Tighten the hold-down clip's bottom set screw first, then hold the shelf down flat against the

bracket and tighten the **side set screw**. Do not overtighten.

**3.** Align **shelf end inserts** into their respective shelf channels. Make sure that the shelf end is flush with the edge of the shelf. Tighten the **bottom set screws**. Do not overtighten.